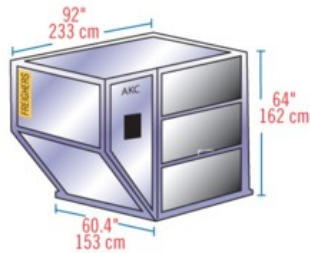


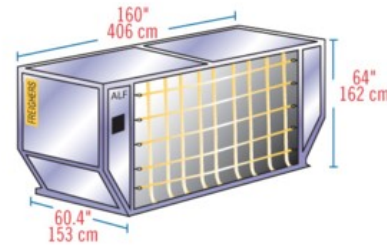
# AIR FREIGHT CONTAINER SPECIFICATIONS

The following guide to airfreight containers, also called Unit Load Devices (ULD), has been developed from materials supplied by IATA (International Air Transport Association) and the ATA (Air Transport Association of America). This guide lists and illustrates the average external dimensions and weight limitations of the primary containers in use today. Exact dimensions and weight limitations will vary by manufacturer and availability will vary by air carrier and trackage.

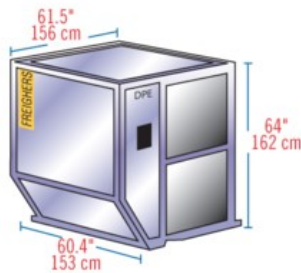
**LD-1**  
 IATA ULD Code: AKC Contoured Container  
 Also known as: AVC, AVD, AVK, AVJ  
 Forkable: AVY  
 Classification: LD-1  
 Rate Class: Type 8  
 Suitable for: B747, B767, B777, MD-11  
 Internal volume: 4.8 cu. m (169.5 cu. ft)  
 Maximum gross weight: 1588 kg (3501 lb)



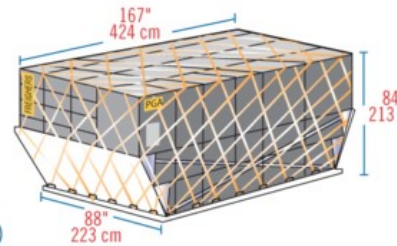
**LD-6**  
 IATA ULD Code: ALF Contoured Container  
 Also known as: AWD, AWF  
 Forkable: AWC  
 Classification: LD-6  
 Rate Class: Type 6W  
 Suitable for: A300, A310, A330, A340, B747, B777, DC-10, MD-11, L1011  
 Internal volume: 8.9 cu. m (314 cu. ft)  
 Maximum gross weight: 3175 kg (7000 lb)



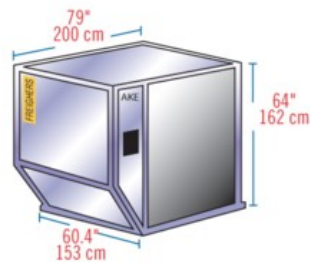
**LD-2**  
 IATA ULD Code: DPE Contoured Container  
 Also known as: APA, DPA  
 Forkable: DPN  
 Classification: LD-2  
 Rate Class: Type 8D  
 Suitable for: B767  
 Internal volume: 3.4 cu. m (120 cu. ft)  
 Maximum gross weight: 1225 kg (2700 lb)



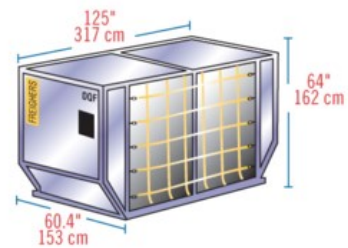
**LD-7**  
 IATA ULD Code: XAW P1P Pallet with fixed angle wings and net  
 Classification: LD-7  
 Rate Class: Type 5  
 Suitable for: Wide body: All aircraft  
 Maximum volume with overhang: 14.0 cu. m (494 cu. ft)  
 Maximum gross weight: 5000 kg (11023 lb)



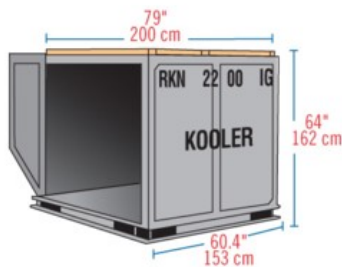
**LD-3**  
 IATA ULD Code: AKE Contoured Container  
 Also known as: AKE, AVA, AVB, AVC, AVK, DVA, DVE, DVP, XKS, XKG  
 Forkable: AKN, AVN, DKN, DVN, XKN  
 Classification: LD-3  
 Rate Class: Type 8  
 Suitable for: A300, A310, A330, A340, B747, B767, B777, DC-10, MD-11, L1011  
 Internal volume: 4.3 cu. m (152 cu. ft)  
 Maximum gross weight: 1588 kg (3500 lb)



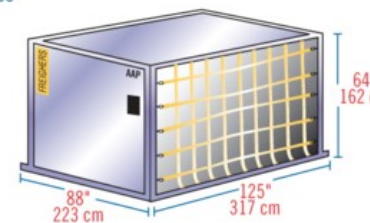
**LD-8**  
 IATA ULD Code: DQP  
 Also known as: ALE, ALN, DLE, DLF, DQP, MQP  
 Classification: LD-8  
 Rate Class: Type 6A  
 Suitable for: B767  
 Internal volume: 6.85 cu. m (242 cu. ft)  
 Maximum gross weight: 2450 kg (5401 lb)



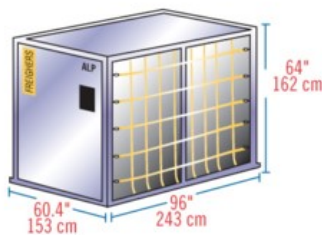
**Insulated LD-3**  
 IATA ULD Code: RKN  
 Classification: LD-3  
 Rate Class: Type 8  
 Suitable for: A300, A310, A330, A340, B747, B767, B777, DC-10, MD11, L1011  
 Internal volume: 3.0 cu. m (109 cu. ft)  
 Maximum gross weight: 1588 kg (3500 lb)  
 Temperature Control Range: -20C to +20C



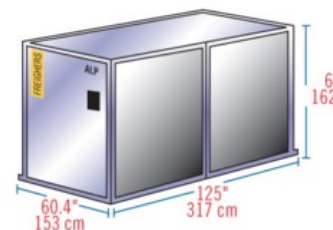
**LD-9**  
 IATA ULD Code: AAP Enclosed Pallet on P1P base  
 Also known as: AA2, XAG, XAV  
 Classification: LD-9  
 Rate Class: Type 5  
 Suitable for: A300, A310, A330, A340, B747, B767, DC-10, MD-11, L1011  
 Internal volume: 9.1 cu. m (321 cu. ft)  
 Maximum gross weight: 4624 kg (10194 lb) lower deck  
 6000 kg (13227 lb) main deck



**LD-4**  
 IATA ULD Code: ALP Rectangular Container  
 Also known as: ALD, AWD, AWZ, DLP  
 Forkable: ALB, ALC, AWB, AWC  
 Classification: LD-4  
 Rate Class: Type 8  
 Suitable for: B767, B777  
 Internal volume: 5.7 cu. m (201 cu. ft)  
 Maximum gross weight: 2449 kg (5399 lb)



**LD-11**  
 IATA ULD Code: ALP Rectangular Container  
 Also known as: ALD, AW2, AWB, AWD, AWZ, DLP, DWB, MWB  
 Refrigerated version: RWB, RWD, RWZ  
 Classification: LD-11  
 Rate Class: Type 6  
 Suitable for: A300, A310, A330, A340, B747, B777, DC-10, MD-11, L1011  
 Internal volume: 7.2 cu. m (253 cu. ft)  
 Maximum gross weight: 3176 kg (7002 lb)



**A-2**  
 IATA ULD Code: DAA  
 Classification: A-2  
 Suitable for: B747, B747F, DC8, DC10, A300/F  
 Internal volume: 12.6 cu. m (444 cu. ft)  
 Maximum gross weight: 6033 kg (13300 lb)

